

IMPACT PARTNERS



OPPORTUNITIES AND UPDATES | AUGUST 2024



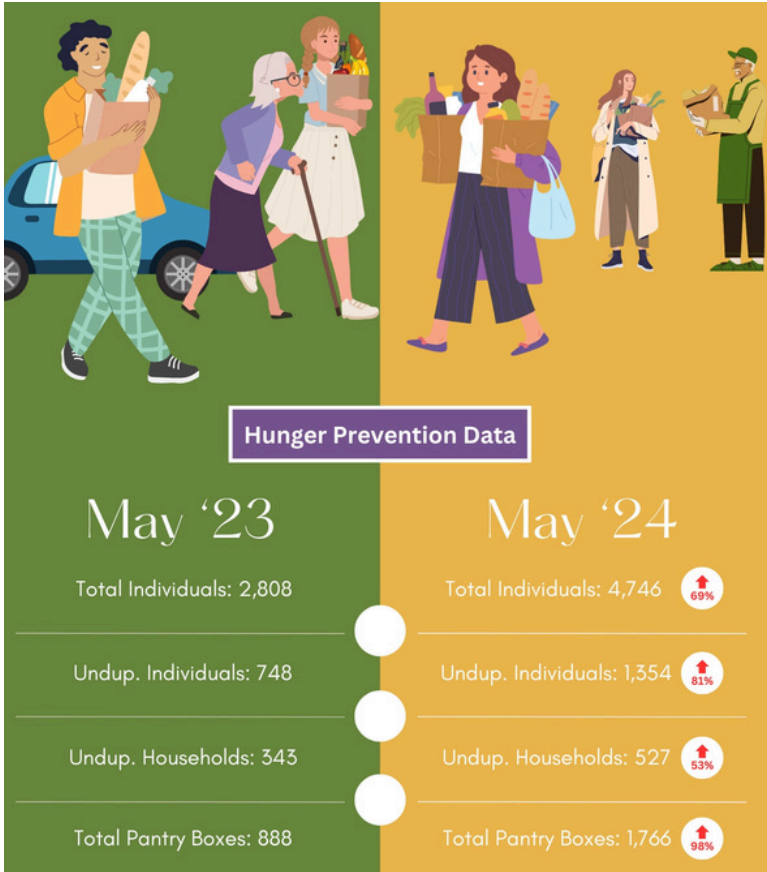
Charlotte CARE Center

JOINING FORCES TO PREVENT HUNGER AND HOMELESSNESS

Stronger Together. That is the heart and philosophy behind the recent merger of our Impact Partner, The Homeless Coalition, and St. Vincent de Paul CARES (SVdP CARES). Both organizations have been serving Charlotte County veterans, individuals and families for decades. By joining forces, these two valuable organizations are streamlining their efforts, enhancing care and preventing and ending homelessness. **This new partnership is reflected in a new name:** The Homeless Coalition is now **Charlotte CARE Center**.

“ It’s much easier to help an individual *stay* housed than it is to help them rebuild after losing everything. ”

SVdP CARES is a proven leader in ending homelessness with a success rate of over 80% in 19 Florida counties. “Our mission remains the same, but the merger provides for increased focus and resources dedicated to prevention and education,” says Amberly Leverich, Development Manager at Charlotte CARE Center. “It’s much easier to help an individual or family *stay* housed than to help them regroup and rebuild after losing everything. We are working toward making homelessness rare, brief and one-time.”



Prioritizing Prevention

The rapidly rising cost of food and housing over the last few years has placed tremendous challenges on individuals and families who were already struggling to make ends meet. For example, the number of food pantry boxes distributed in May 2024 nearly doubled compared to May 2023 (see graphic).

Charlotte CARE Center addresses this reality through meeting immediate practical needs while equipping individuals with tools to help them become financially stable and independent.

The Center will continue to offer the Bridges out of Poverty program which helps participants gain the knowledge and skills to become financially

independent. "This program gives the opportunity to learn and apply skills to help individuals use the financial resources they do have more effectively," says Amberly. "The program's curriculum also addresses the root causes of generational poverty and provides realistic solutions to long-term financial issues."

Charlotte CARE Center continues to provide food pantry boxes and daily lunch and dinner 365 days a year. They also offer a safe, supervised, low barrier Emergency Shelter for up to 30 days. "Our philosophy is to quickly move newly homeless clients from Emergency Shelter back into permanent housing through intensive case management," says Leverich. "The number one service we provide is stability and keeping families intact."

Selfless Service Opportunities at Charlotte CARE Center

Serving at our Partners gives us opportunities to show the love of Jesus in ways that meet practical needs and draw others to Him! **Here are a few ways to do that right now:**

Food Pantry Distribution.

Wednesdays from 12 to 4:30 p.m.; Fridays from 9 a.m. to 1:30 p.m.

Assist with drive-thru pantry, fill pantry boxes with food and load boxes into vehicles.

Food Pantry Support.

Wednesdays from 9 to 11 a.m.; Fridays from 8 to 10 a.m.

Assist with preparation for pantry distribution, set-up tables and racks with food donations.

Fabulous Finds Resale Store.

Weekend Shifts

Volunteers needed to receive and process donated items, sort and hang clothing, product placement and cleaning if necessary.

To volunteer, contact Yoko Miyamoto at yokohana@charlotte.care or (727) 248-5004.